

# GeneXusで実現する デザインシステムとUX

Yu Matsumoto – GeneXus Japan Inc.

[genexus.jp](https://www.genexus.jp)

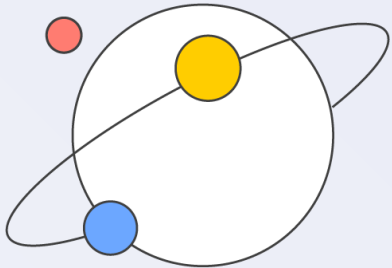
# GeneXus 18

Acceleration & Future Proofing

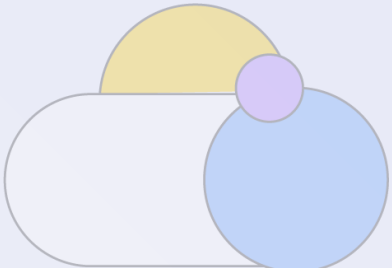




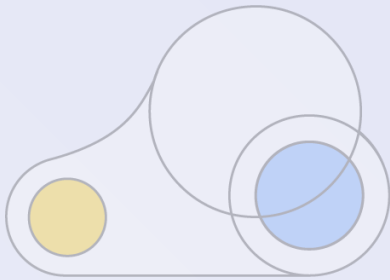
# GeneXus 18



Total Experience



Cloud Native



Automated DevOps

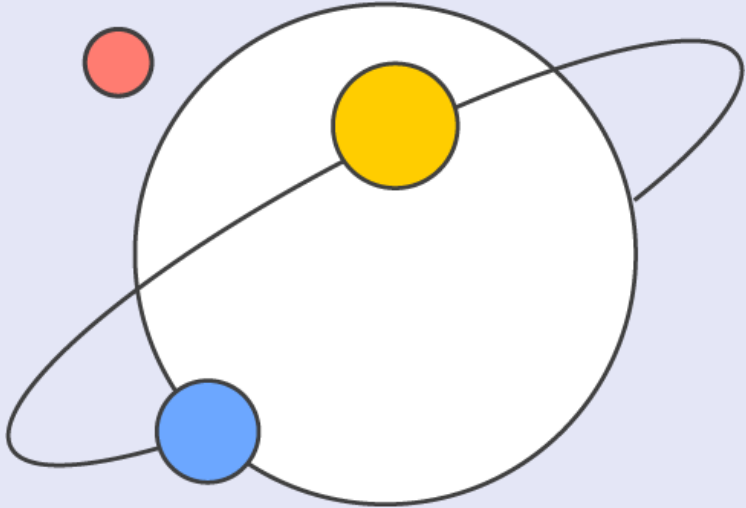


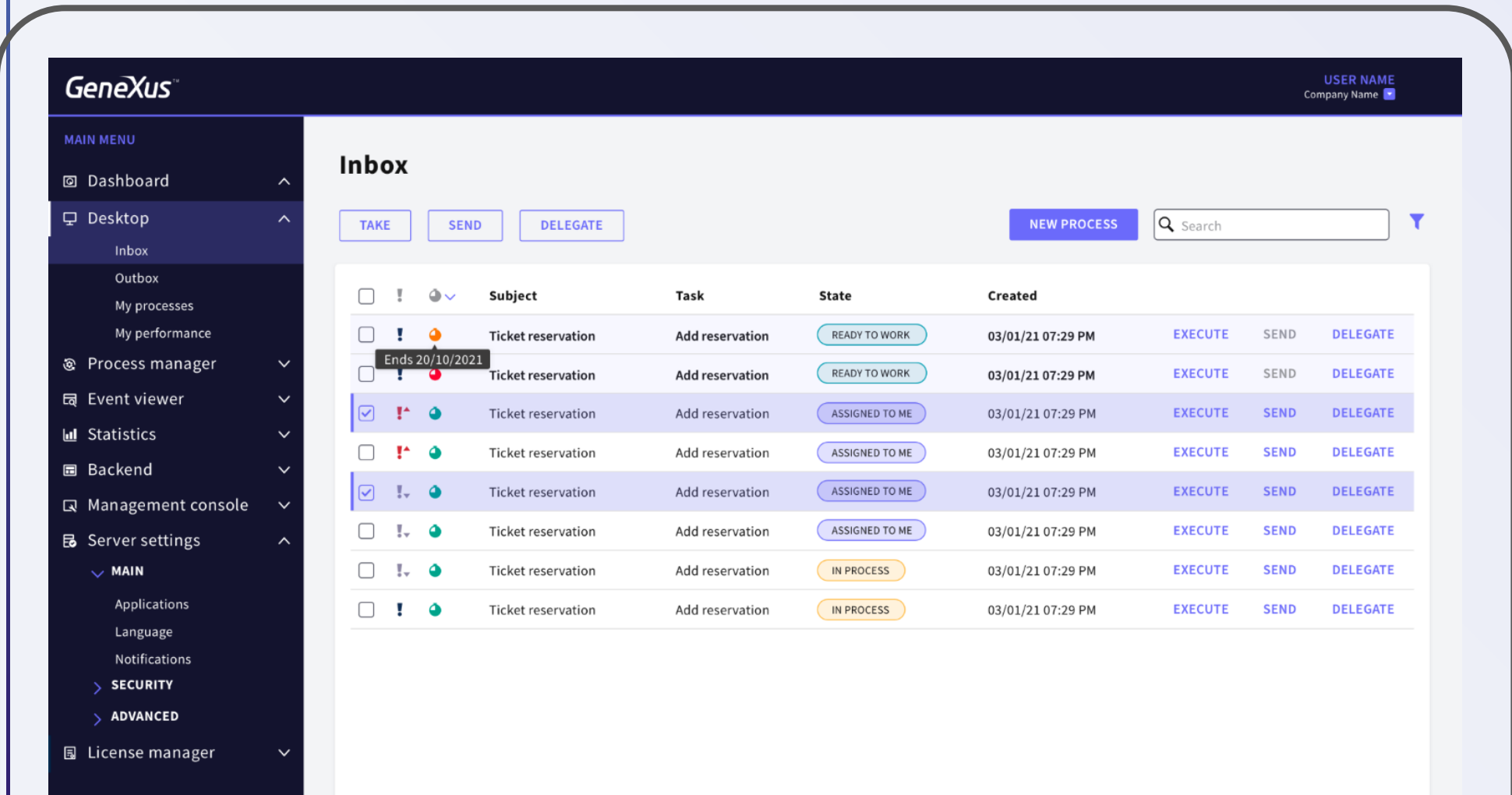
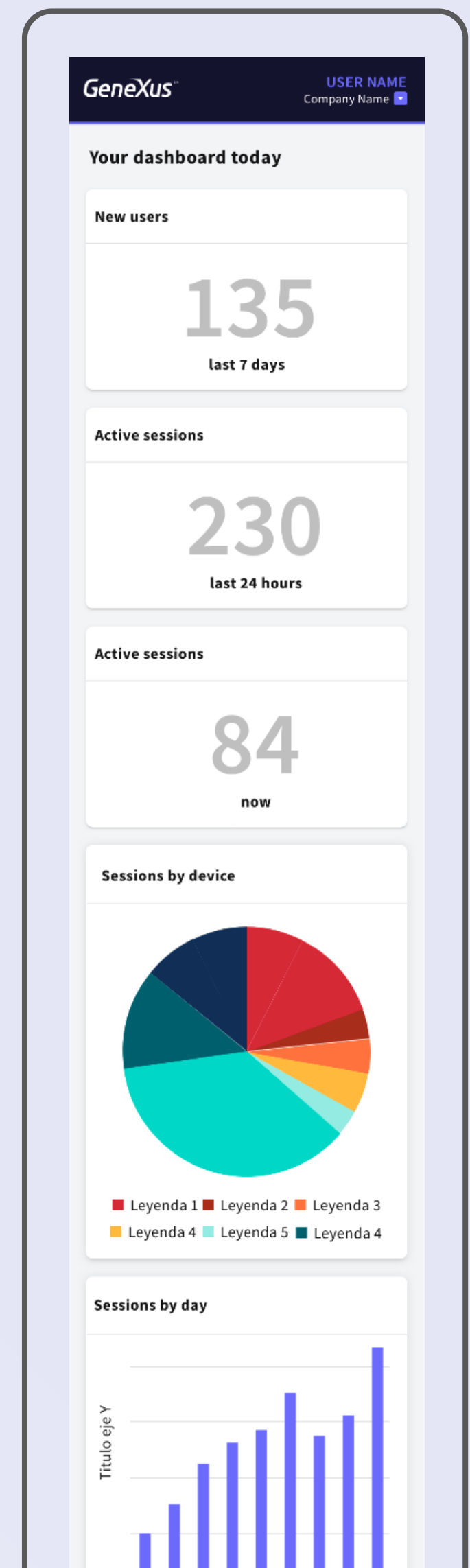
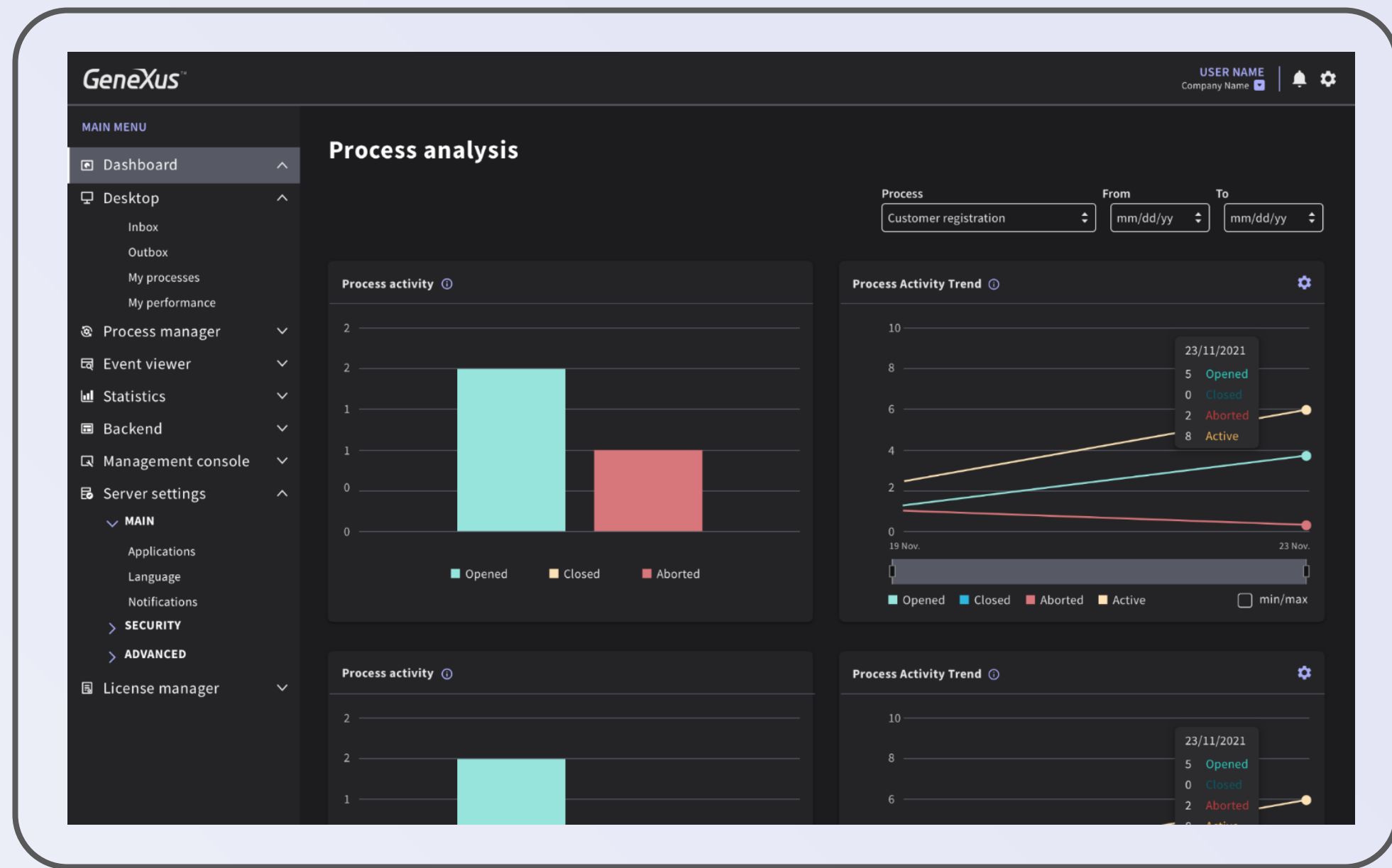
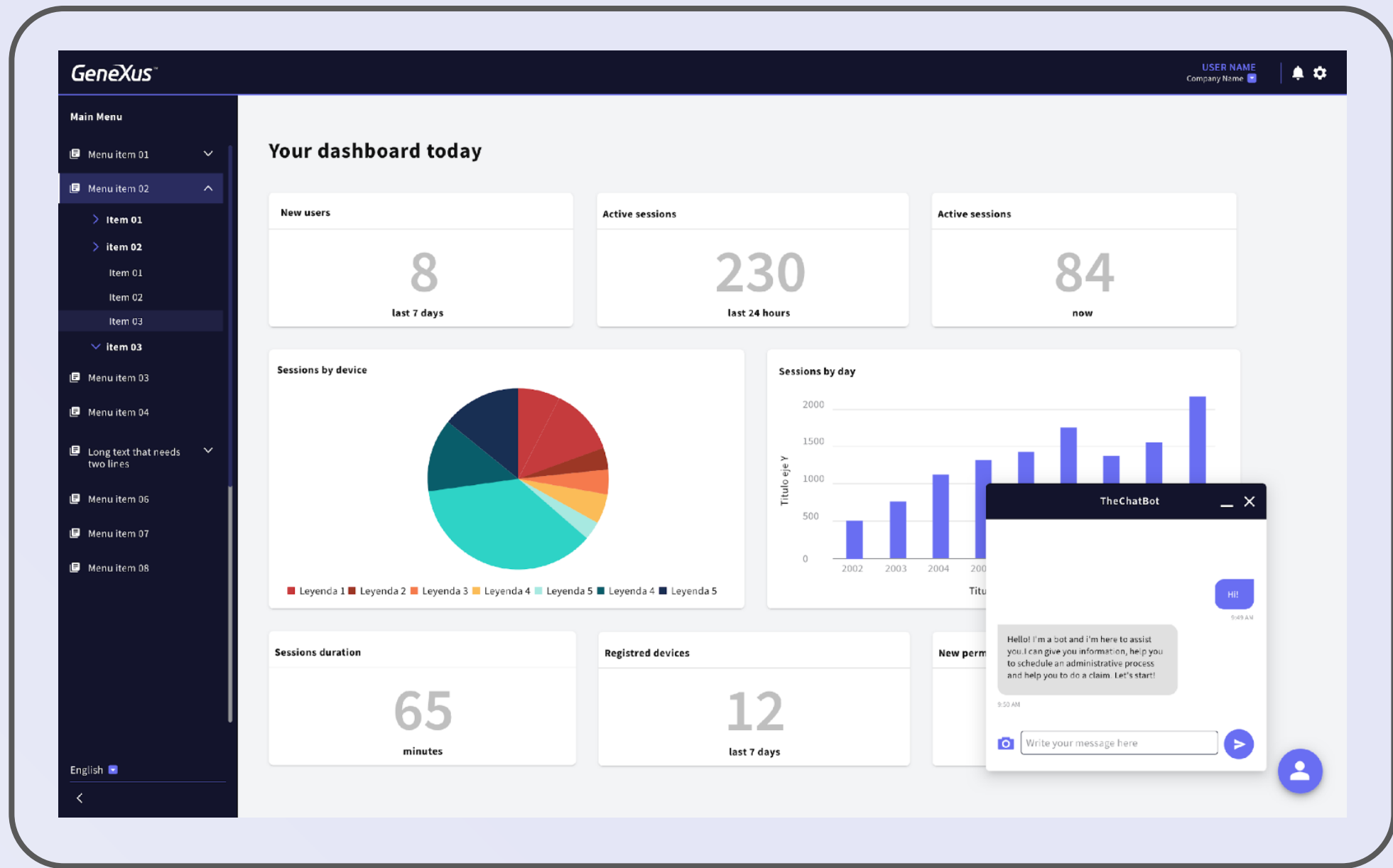
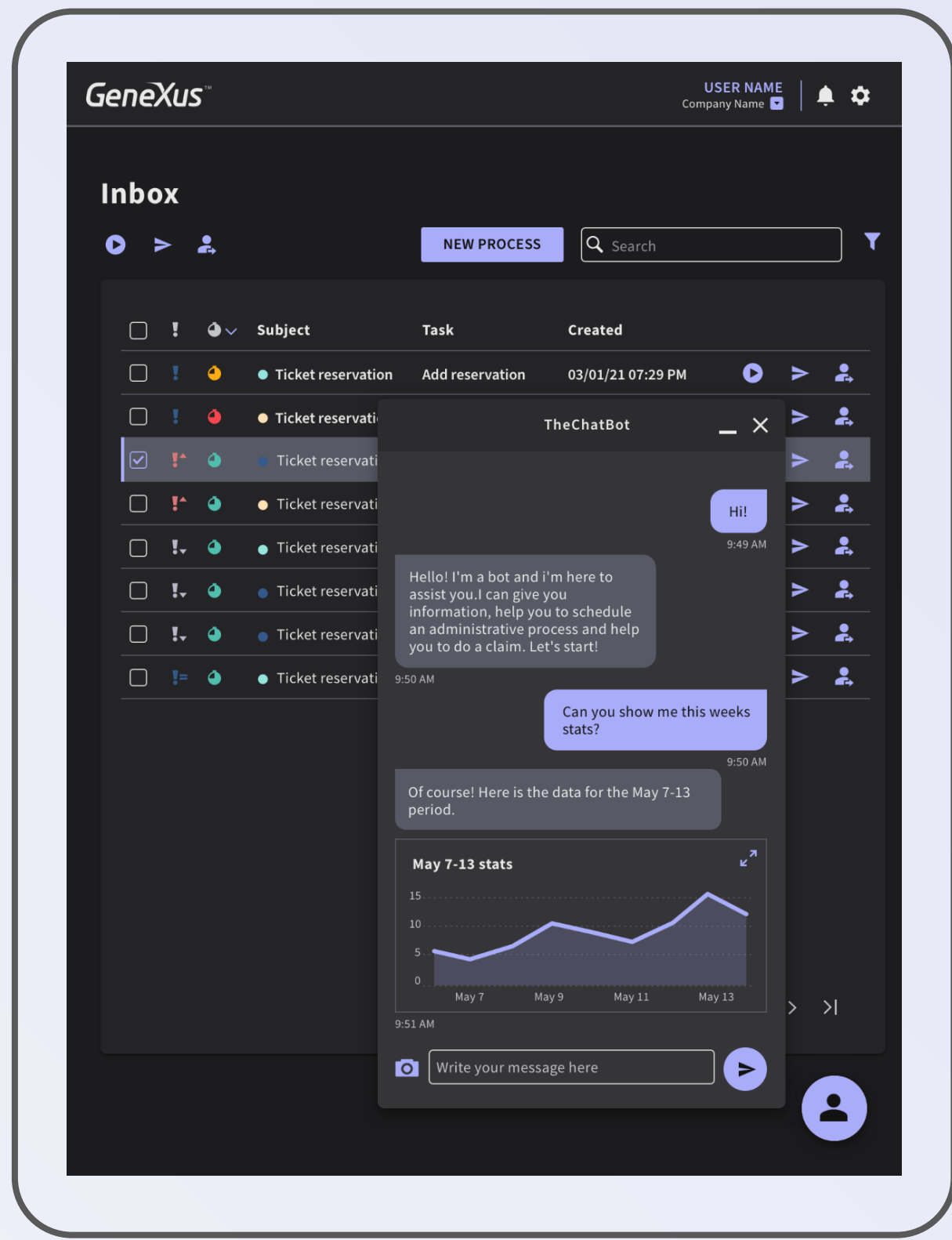
Knowledge-driven



Super Apps & Mini Apps

# Total Experience



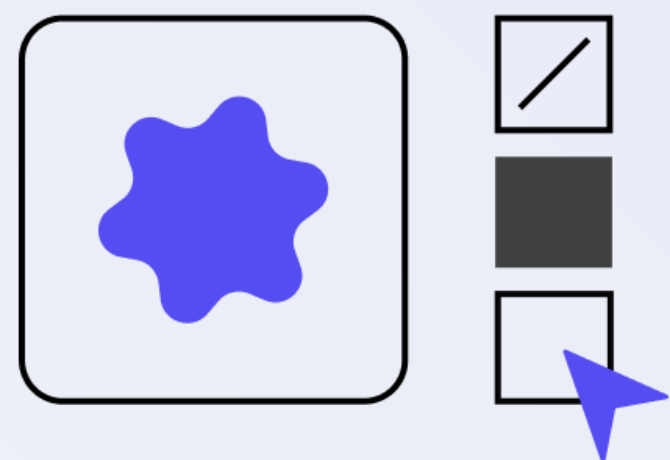




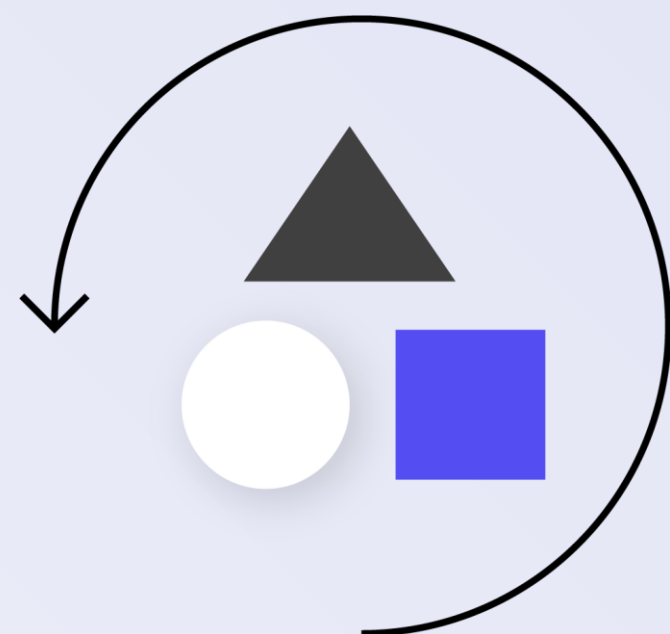
# Design System Object

## Domain Specific Language for modelling Design Systems

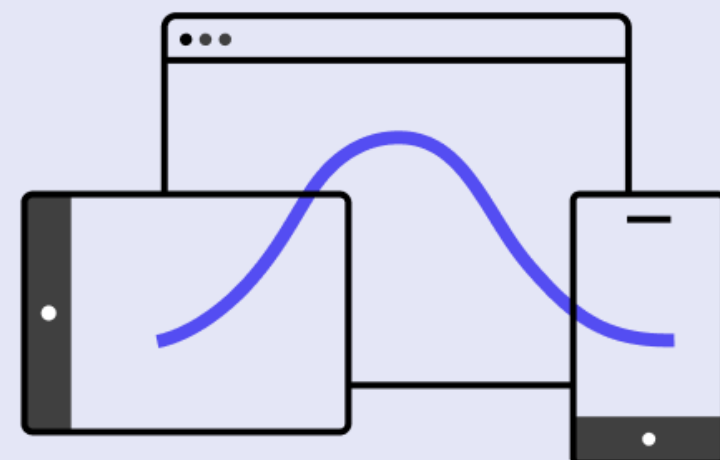
# Design System Object



Customizable & Flexible



Consistent



Multi-Experience



FrontendApp X

Tokens Styles Documentation

```

1 tokens FrontendApp
2 {
3   #colors
4   {
5     Surface: #FFFFFF;
6     OnSurface: #191819;
7     Primary: #43624B;
8     Secondary: #D82822;
9     Hightlight: #D82822;
10    White: #FFFFFF;
11    Black: #181918;
12  }
13  #fonts
14  {
15    Title: AbhayaLibre-Bold;
16    Body-regular: Graphik-Regular;
17  }
18  #fontSizes
19  {
20    H1: 95px;
21    H2: 60px;
22    Body-regular: 16px;
23  }
24 }

```

Search tokens All

### COLORS

| NAME       | COLOR VALUE |
|------------|-------------|
| Surface    | #FFFFFF     |
| OnSurface  | #191819     |
| Primary    | #43624B     |
| Secondary  | #D82822     |
| Hightlight | #D82822     |
| White      | #FFFFFF     |
| Black      | #181918     |

+ Add new token

### FONTS

| NAME             | FONT             |
|------------------|------------------|
| A1e Title        | AbhayaLibre-Bold |
| A1e Body-regular | Graphik-Regular  |

+ Add new token

### FONTSIZES

| NAME | SIZE |
|------|------|
| H1   | 95px |

FrontendApp X

Tokens Styles Documentation

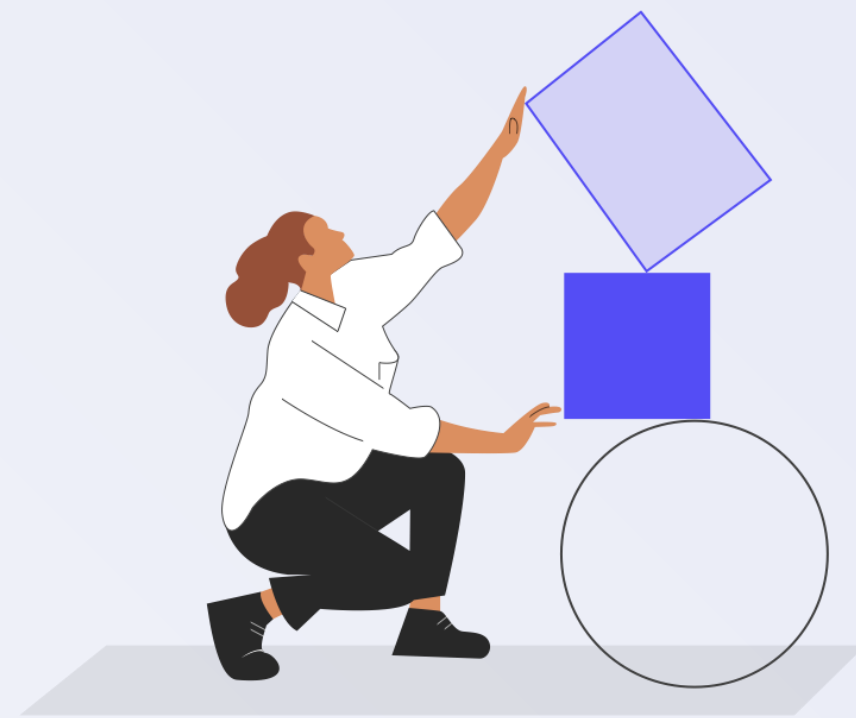
```

1 styles FrontendApp
2 {
3   @font-face
4   {
5     font-family: AbhayaLibre-Bold;
6     src: gx-file(AbhayaLibre-Bold_ttf);
7   }
8   .H1
9   {
10    color: $colors.Black;
11    font-size: $fontSizes.H1;
12    font-family: $fonts.Title;
13    font-weight: bold;
14    letter-spacing: -1.72px;
15    line-height: 75px;
16  }
17  1 reference
18  .H1_Negative
19  {
20    @include H1;
21    color: $colors.White;
22  }
23  2 references
24  .Form
25  {
26    background-color: $colors.Surface;

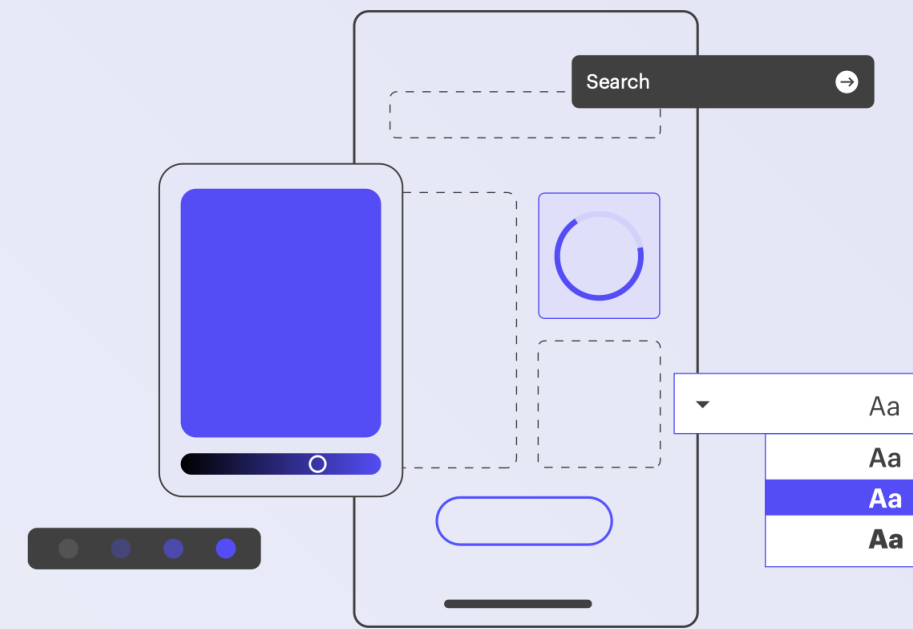
```



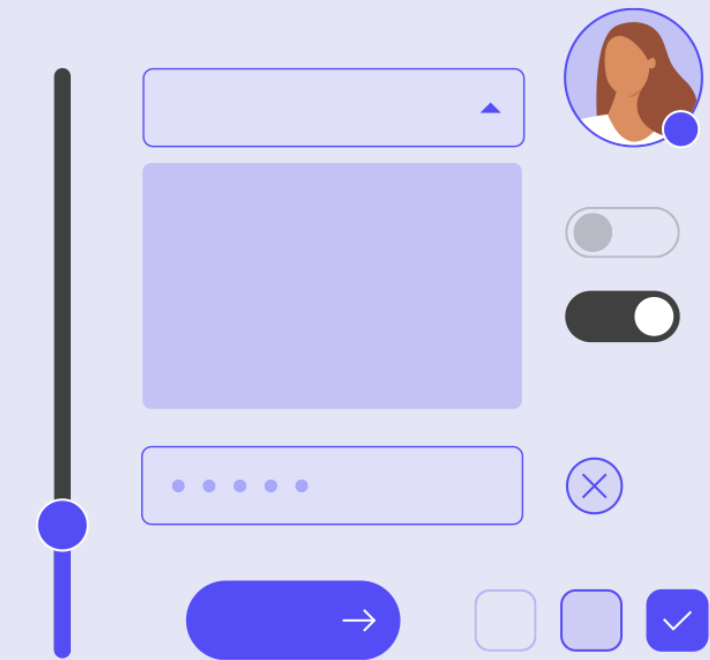
# Strategies for well-designed software



BYOD  
Bring Your Own Design



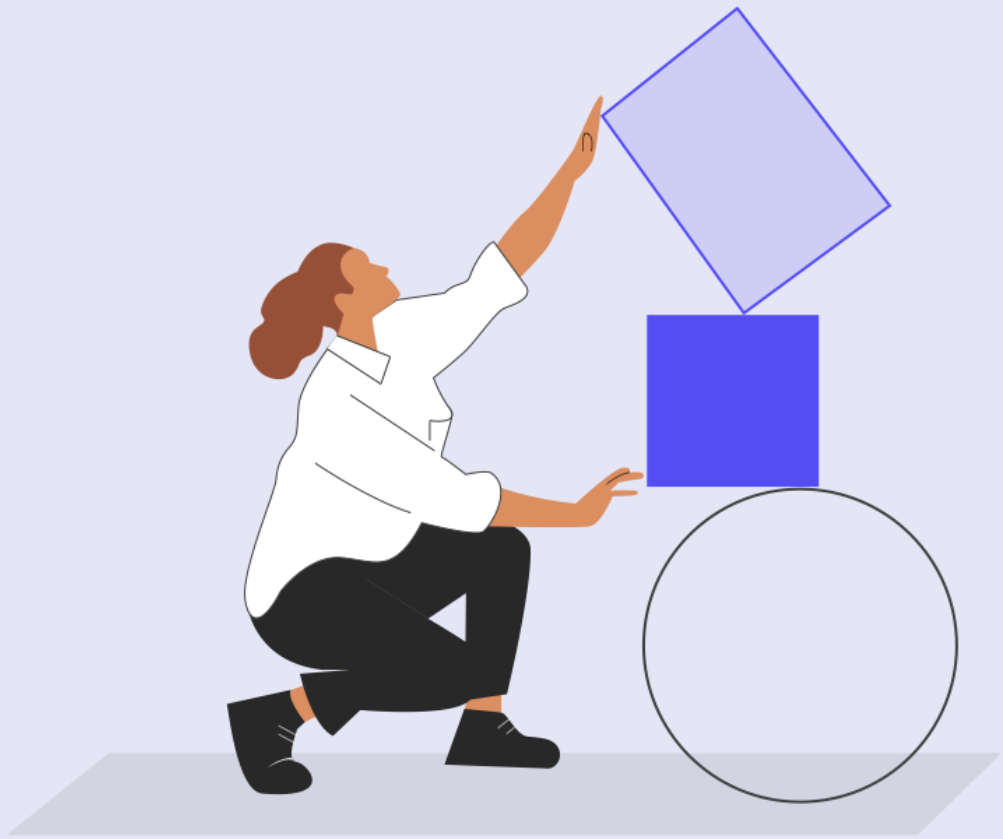
Design System Accelerators  
Created by our Partners



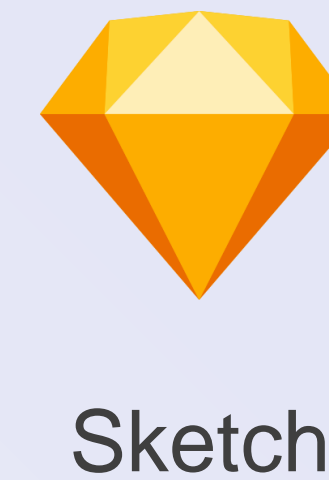
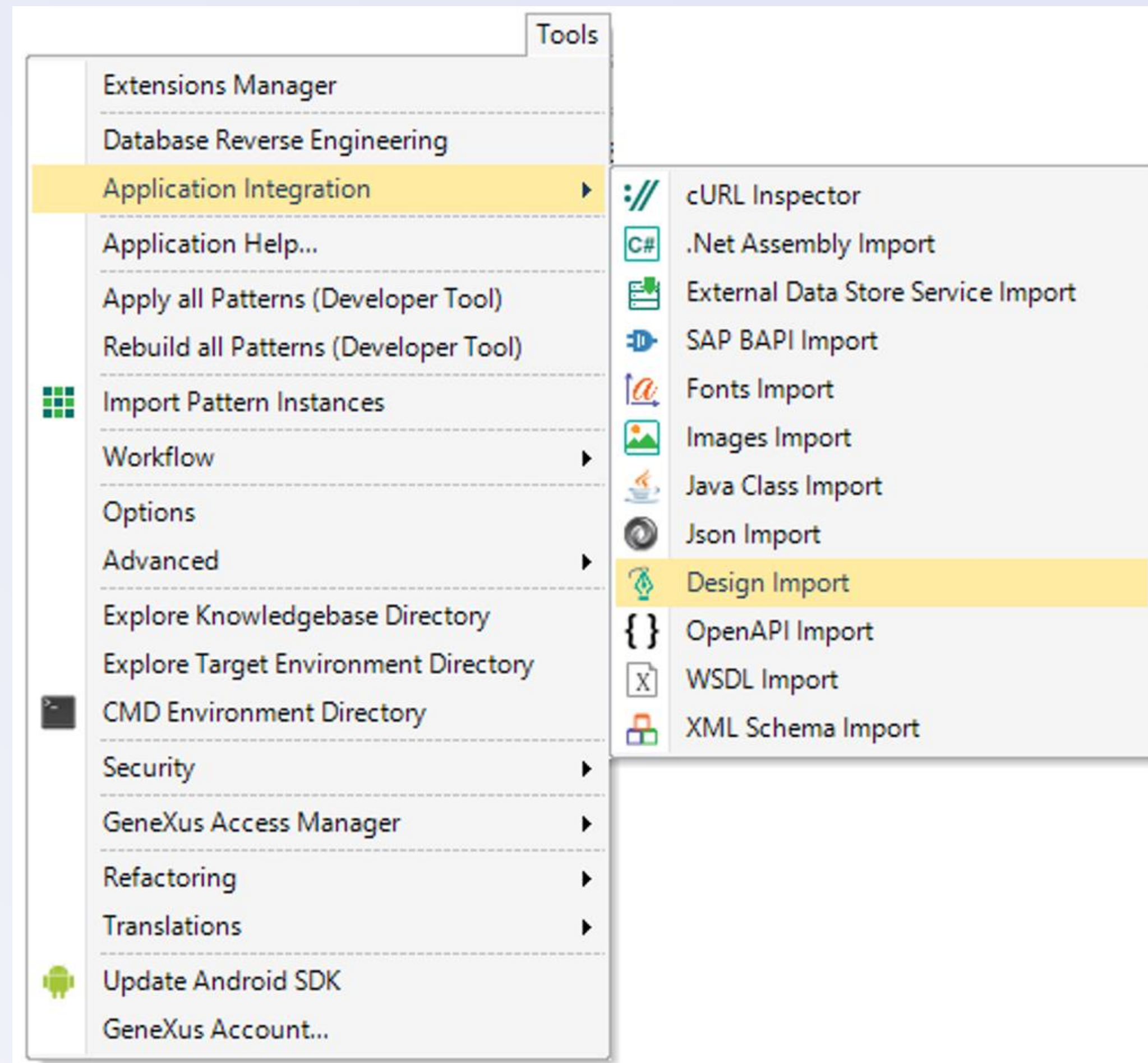
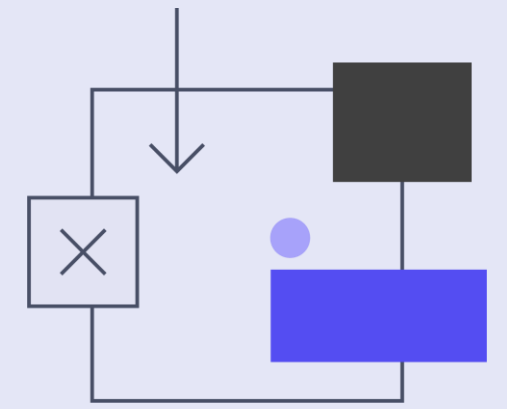
Bundled Design Systems  
Provided by us

# BYOD

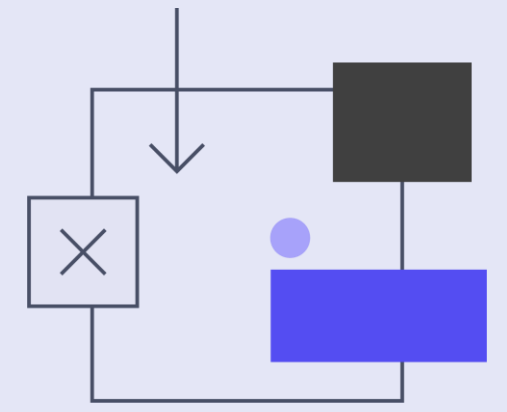
## Bring your own Design



# Import from external Design

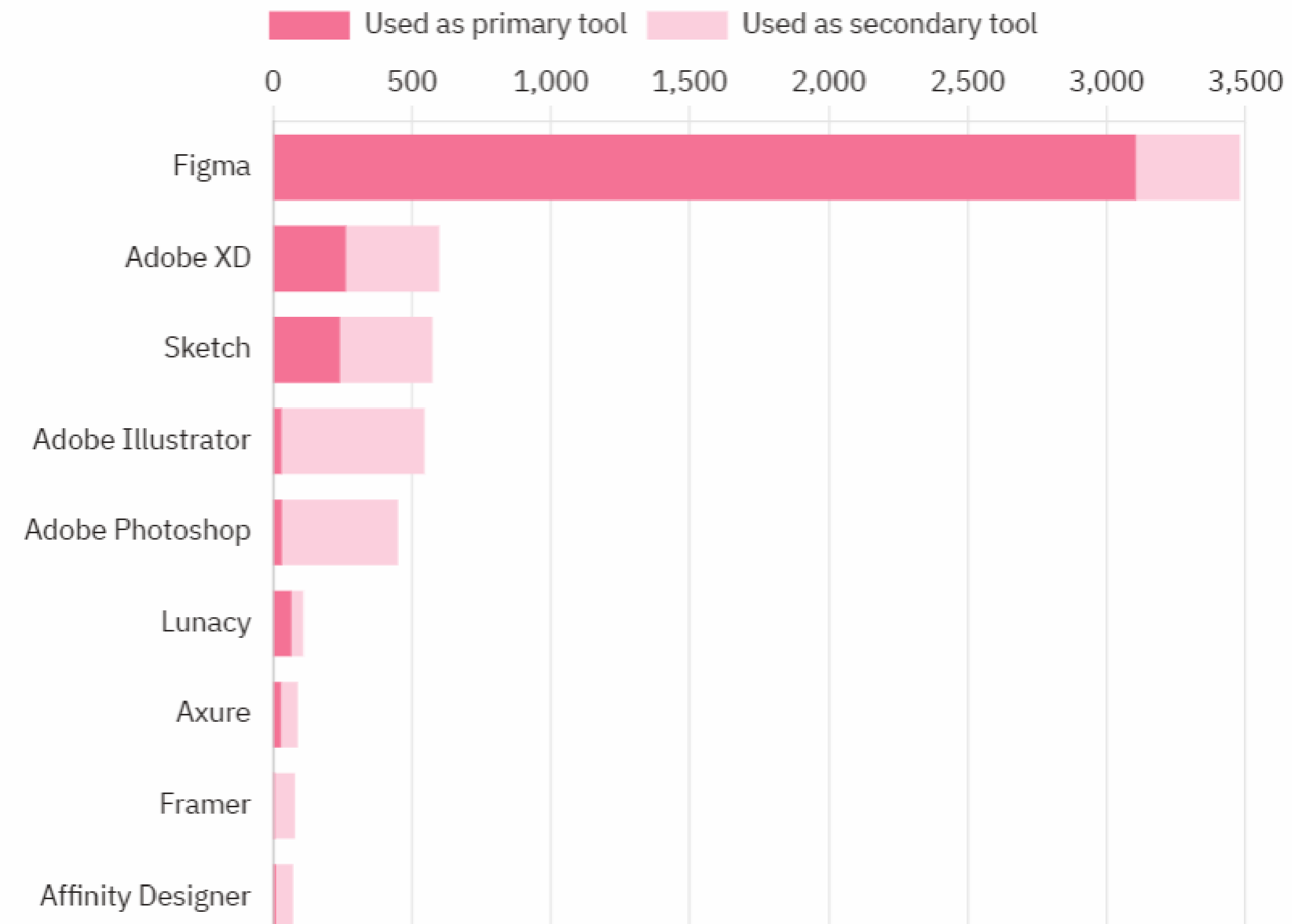






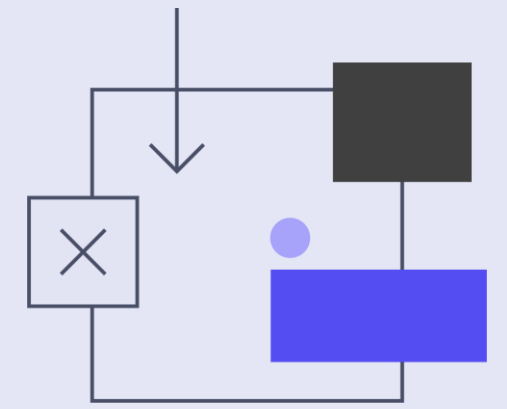
## Most Popular UI Design Tools

Which software do you primarily use for UI design?



Source: <https://uxtools.co/survey/2022/ui-design>

## Which objects are created in the KB?



Design System Object

Panels

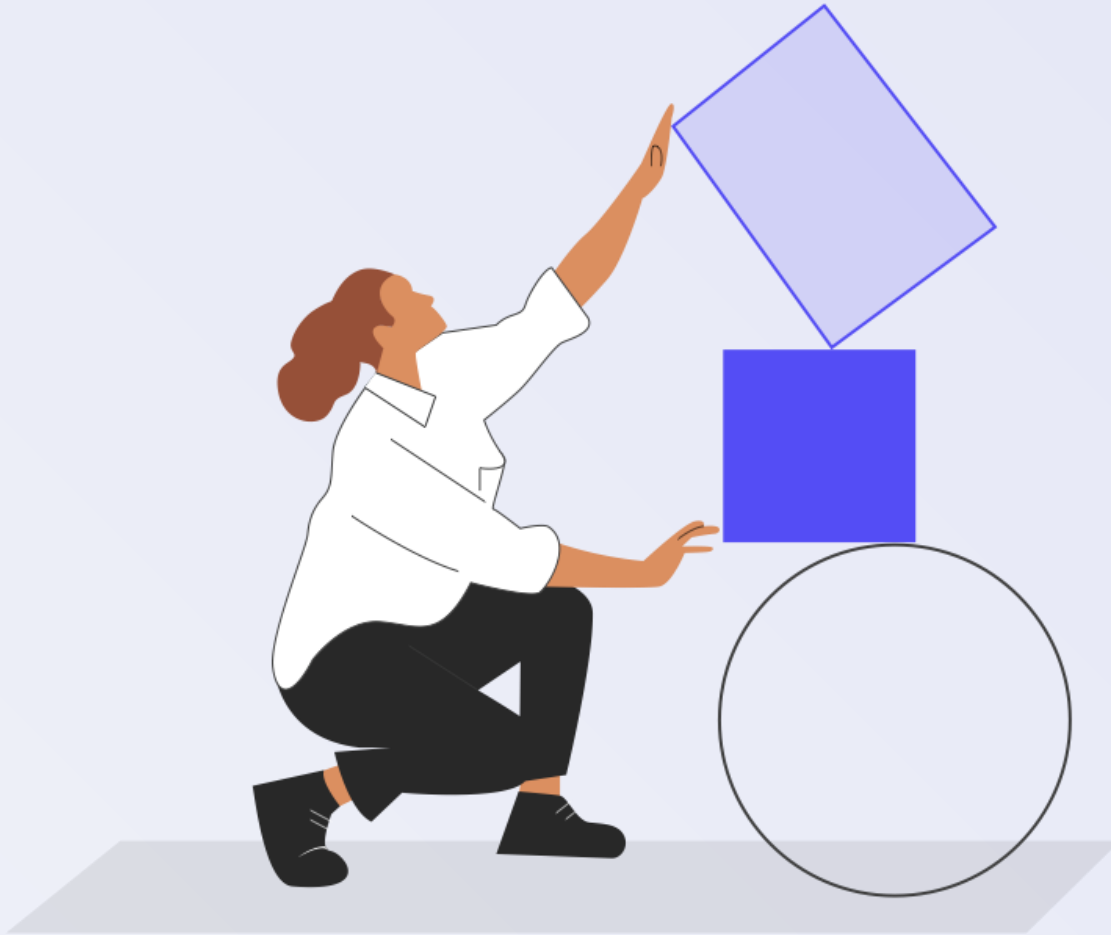
Stencils

Images / Fonts

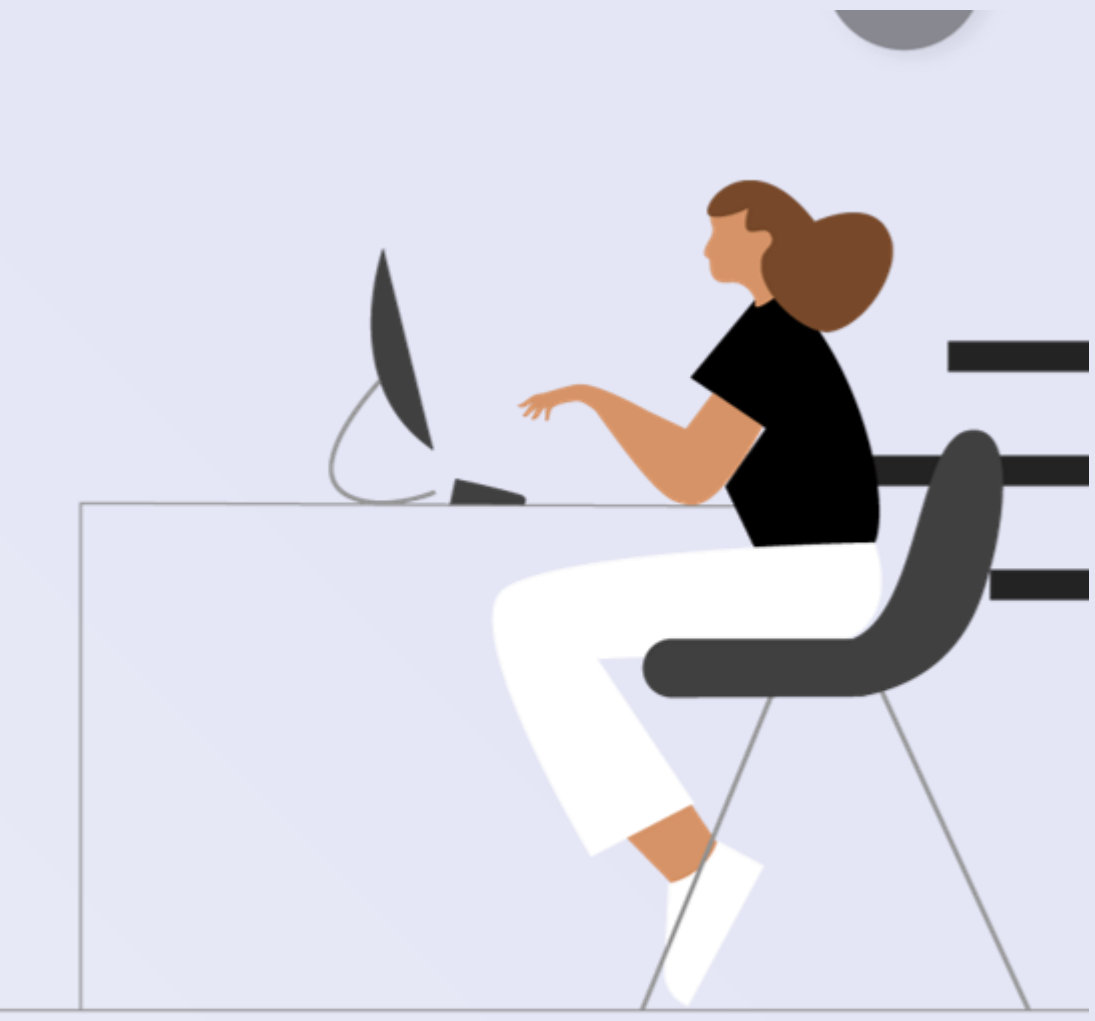
Data Providers / SDT

Test Data

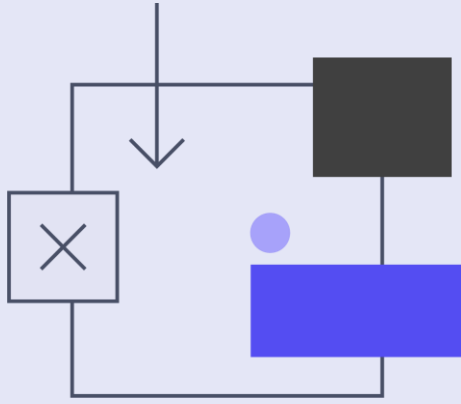
# Get the best of both worlds



Designer

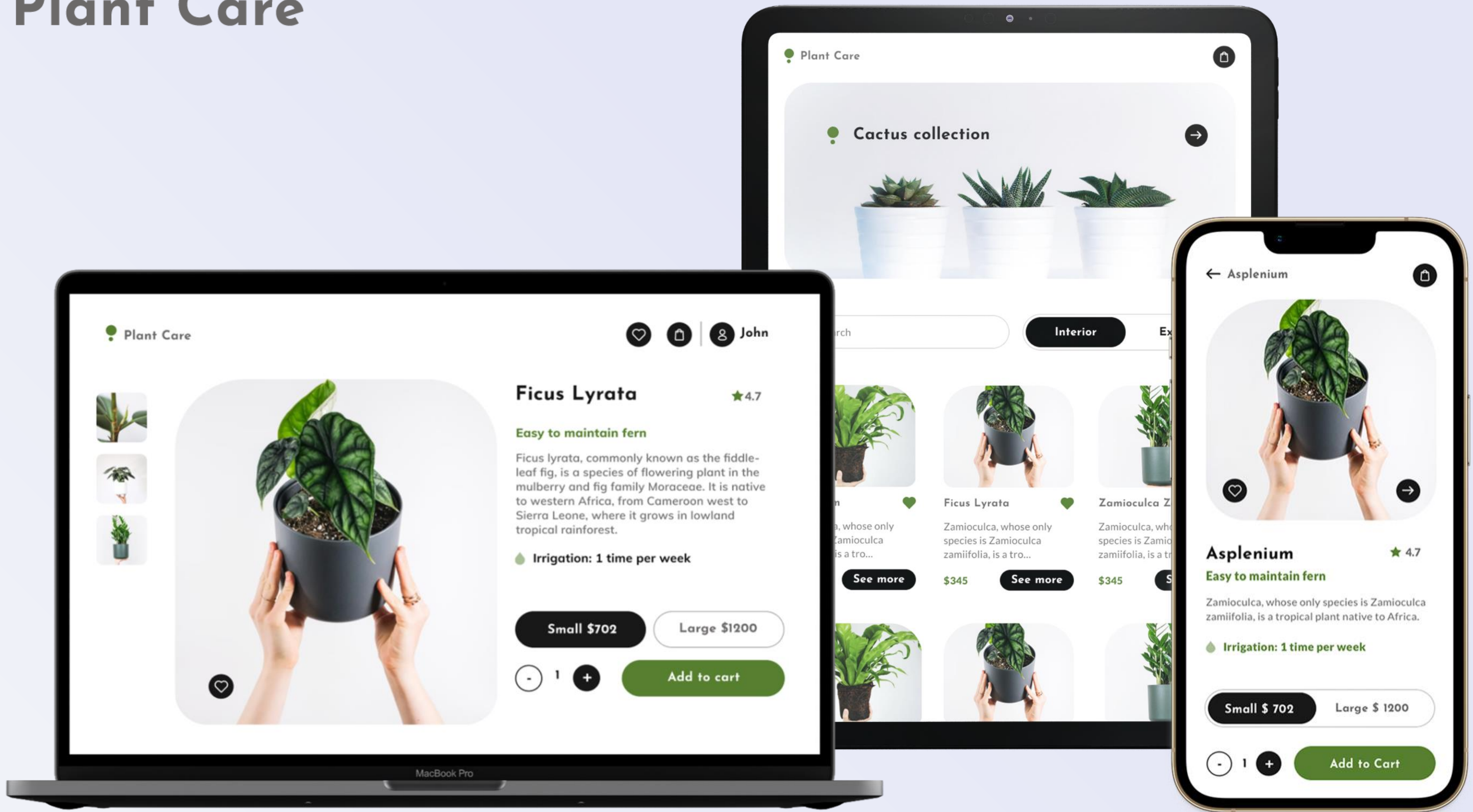


Developer

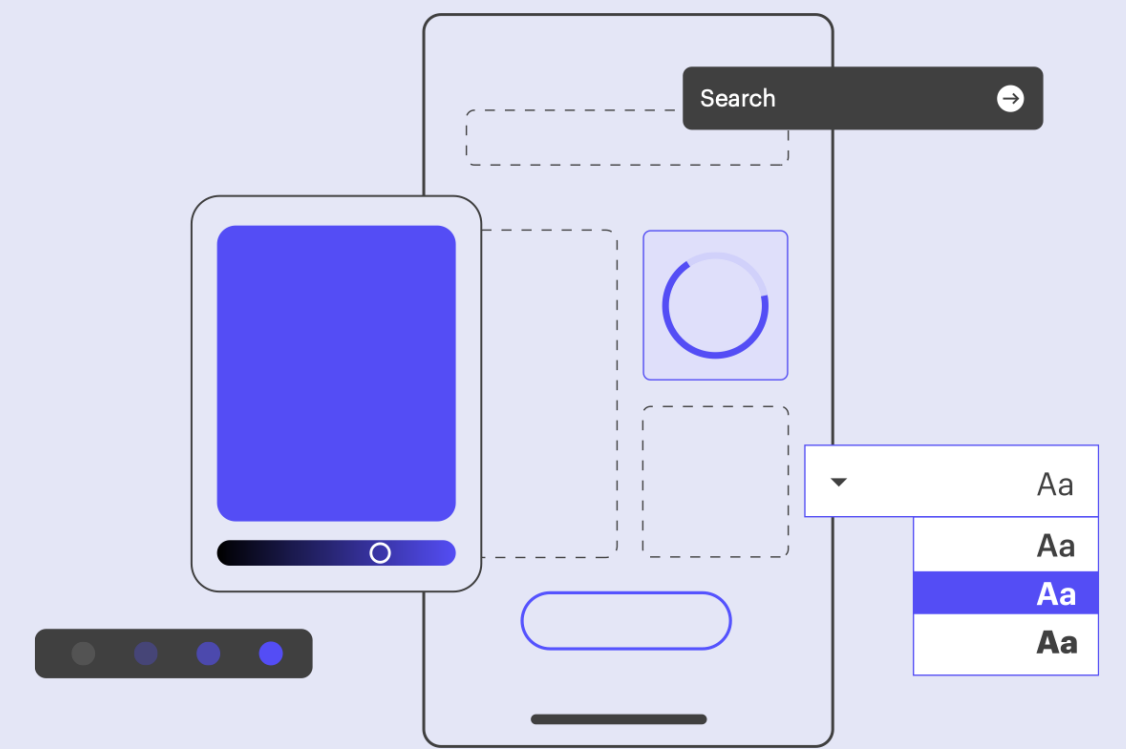




# Plant Care



# Design System Accelerators Created by our Partners





**Dashboard**

352 SALES, \$2,540 REVENUE, 75,250 VIEWS, 540 USERS

**Task Board**

- Beer
- Cupcake
- Delicious cherries
- Lollipop
- Stake
- Green Apple
- Tannat Wine

**Monthly Report**

Sales: Last Month

Goal Completion

- Add Products to Cart: 100 / 120
- Complete Purchase: 85 / 150
- Like to Page in Facebook & LinkedIn: 59 / 80
- Contact us: 20 / 100

**Sales Table**

| Name               | Price    | Status       |
|--------------------|----------|--------------|
| Beer               | \$ 1,000 | Available    |
| Tannat Wine        | \$ 890   | Available    |
| Lollipop           | \$ 200   | Out of Stock |
| Green Apple        | \$ 7,000 | Coming Next  |
| Delicious cherries | \$ 4,000 | Available    |
| Stake              | \$ 3,000 | Available    |
|                    | \$ 3,000 | Available    |

Danube

**WORKWITHPLUS**

Home Services Studios Customers Contact Backoffice Samples EN

**Your long-term Technology Partner**

Increase your competitive advantages by developing tailored software up to 10x faster with a low code agile approach

Purus (Landing Design System)

**WORKWITHPLUS**

Dashboard Selected Option Sample Pages Multi level menu EN

**DASHBOARD**

3154 APPLICATIONS, 1546 NEW ISSUES, 912 ACTIVE CUSTOMERS

**NOTIFICATIONS**

- Group Records & Totalizers
- Dark Designs
- 100% Customizable
- Bookmarks
- Add new
- Expanded record

Arapey

**SABRINA TACH**

COLLECTION ACCESORIES SALE!

Thames (ECommerce)

**WORKWITHPLUS**

Home Lab List features Data entry Search Inventory Administrator User

WorkWithPlus is the number one suite for the GeneXus community. Increase the productivity of your development team in the creation of content-rich applications.

**TRY THE DEMO**

**Dashboards**

**Lists**

**Feature of Lists**

Zambezi

**WORKWITHPLUS**

Dashboard Selected Option Sample Pages Multi level menu EN ES PT

**Dashboard**

352 Sales, \$75,520 Revenue, +560 Users, 2,540 Views

**Orders**

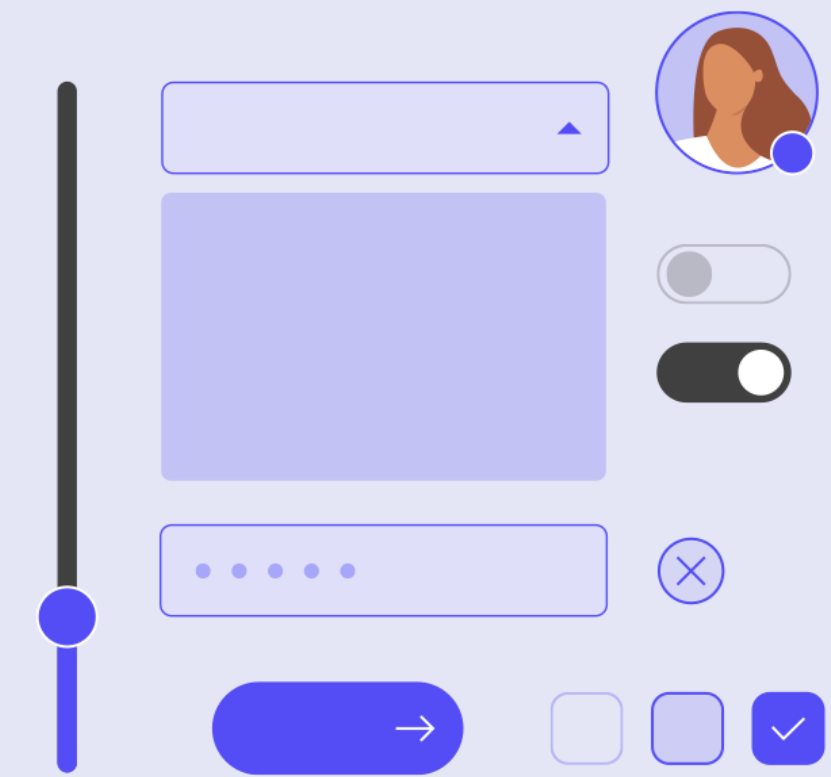
**Task Board**

**Notifications**

Yangtze



# Bundled Design Systems Provided by us



**Unanimomo** is a Design System that was created to be **the soul of the design** of mission-critical business applications.

## Fundamentals

Customizable & Flexible

OOTB

一貫性

拡張性

マルチエクスペリエンス

インクリメンタル

Open Source











# Unanimo

**GeneXus™ LightCRM**

**MAIN MENU**

- Work With Companies
- Work With Contacts
- Work With Meetings

**Work With Companies** INSERT

| Company             | Address                 | Phone        | Logo  |        |        |
|---------------------|-------------------------|--------------|---|--------|--------|
| Brown Safe          | Gaboto 1645             | 5983434334   |    | UPDATE | DELETE |
| Fast Company        | Jackson 3465            | 5983445332   |   | UPDATE | DELETE |
| GeneXus             | Av. Italia 6201         | 059826012082 |  | UPDATE | DELETE |
| IBM                 | Plaza Independencia 222 | 5983344433   |  | UPDATE | DELETE |
| Kids                | Magallanes 3345         | 5984455544   |  | UPDATE | DELETE |
| Language Express    | Minas 223               | 5983334443   |  | UPDATE | DELETE |
| Lumesse             | 18 de julio 2223        | 598323324    |  | UPDATE | DELETE |
| The Laundry Company | Magallanes 3345         | 5983232434   |  | UPDATE | DELETE |

**GeneXus™ LightCRM**


**Company**

ID  
1

Company

Address

Phone

Logo  


CANCEL CONFIRM

一貫性

# GAM

GeneXus™
USER NAME  
Company Name

[Home](#) / [Level.01](#) / [Level.02](#) / [Level.03](#) / [Level.04](#) / Current page

**Main Menu**

- Menu Item 01
- Menu Item 02
- Item 01
- Item 02
- Item 03
- Item 03
- Menu item 03
- Menu item 04
- Long text that needs two lines
- Menu item 06
- Menu item 07
- Menu item 08

English

Español

Portugués

日本語

English

< BACK TO USERS

EDIT USER
EDIT ROLES

## Agustín Cáceres

**General information**

**GUID**  
70e98688-e307-45e2-b5a1-c71dacd801a5

**Name space**  
GAM\_Test\_IPServer\_UI\_GAM

**Authentication type**  
local

**User name**  
admin

**Email**  
admin@admin.com

**First Name**  
administrator

**Last Name**  
user

**External ID**

**Url profile**

**Account is active?**

**Don't want to receive information**

**Cannot change password**

**Must change password**

**Password never expires**

**User is blocked**

**Security policy** (None)

**Enabled in repository**

**Last authentication** 04/22/21 05:19 PM

**Additional information**

✔
User was successfully unlock to get OTP codes!
✕

GeneXus™
USER NAME  
Company Name

[Home](#) / [Level.01](#) / [Level.02](#) / [Level.03](#) / [Level.04](#) / Current page

### Your dashboard today

**New users**

135

last 7 days

**Active sessions**

230

last 24 hours

**Active sessions**

84

now

**Sessions by device**



■ Leyenda 1
 ■ Leyenda 2
 ■ Leyenda 3
 ■ Leyenda 4
 ■ Leyenda 5
 ■ Leyenda 4

**Sessions by day**



Titulo eje X

**Sessions duration**

65

minutes

**Registred devices**

12

last 7 days

**New permissions**

3

last 7 days

# GX Flow

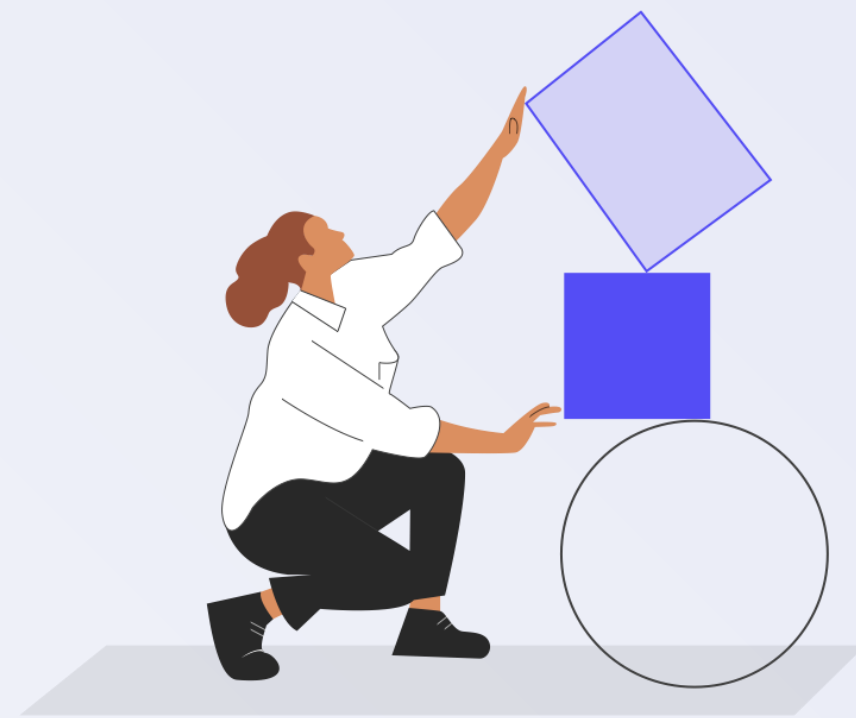
The screenshot shows the 'Inbox' interface in GeneXus. On the left is a 'MAIN MENU' sidebar with options: Dashboard, Desktop, Inbox, Outbox, My processes, My performance, Process manager, Event viewer, Statistics, Backend, Management console, and Server settings. The main area is titled 'Inbox' and contains a table of tasks. At the top of the table are buttons for 'TAKE', 'SEND', 'DELEGATE', and 'NEW PROCESS', along with a search bar. The table has columns for 'Subject', 'Task', 'State', and 'Created'. The tasks listed are 'Ticket reservation' with 'Add reservation' as the task. States include 'READY TO WORK', 'ASSIGNED TO ME', and 'IN PROCESS'. Each row has action buttons for 'EXECUTE', 'SEND', and 'DEL'. A date filter 'Ends 20/10/2021' is visible above the table.

This is a tablet view of the 'Inbox' interface. It features a 'NEW PROCESS' button and a search bar at the top. The table below shows a list of 'Ticket reservation' tasks with 'Add reservation' as the task. Each row includes a play button, a right arrow, and a user icon. The interface is dark-themed and includes a navigation bar at the bottom with left and right arrow icons.

The screenshot displays the 'Process analysis' interface. It includes a 'MAIN MENU' sidebar on the left with options: Dashboard, Desktop, Inbox, Outbox, My processes, My performance, Process manager, Event viewer, Statistics, Backend, Management console, and Server settings. The main area is titled 'Process analysis' and features a 'Process' dropdown menu set to 'Customer registration' and date pickers for 'From' and 'To'. There are two charts: 'Process activity' (a bar chart) and 'Process Activity Trend' (a line chart). The bar chart shows counts for 'Opened', 'Closed', and 'Aborted'. The line chart shows trends for 'Opened', 'Closed', 'Aborted', and 'Active' over time, with a tooltip for 23/11/2021 showing 5 Opened, 0 Closed, 2 Aborted, and 8 Active. A 'min/max' checkbox is also present.

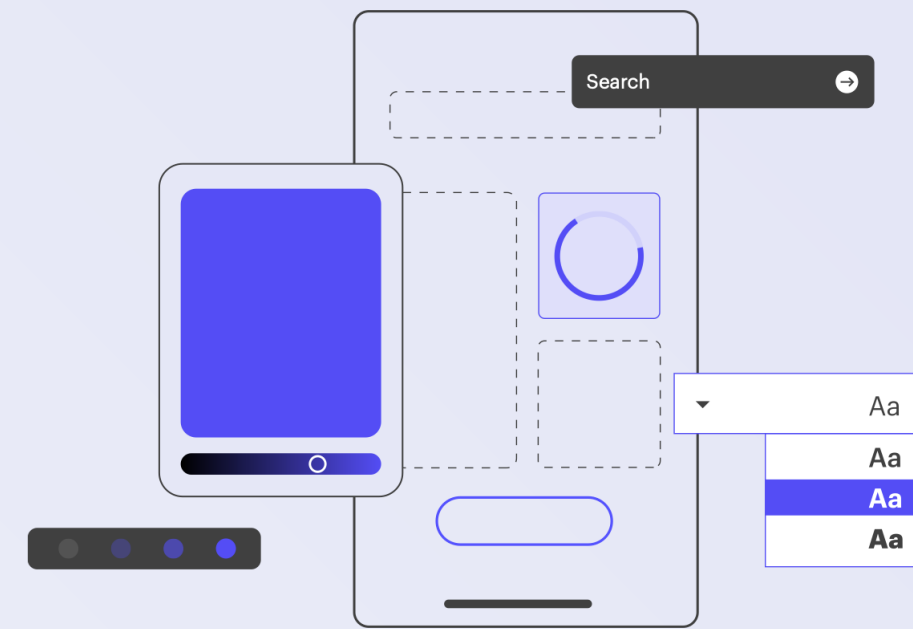


# Strategies for well-designed software



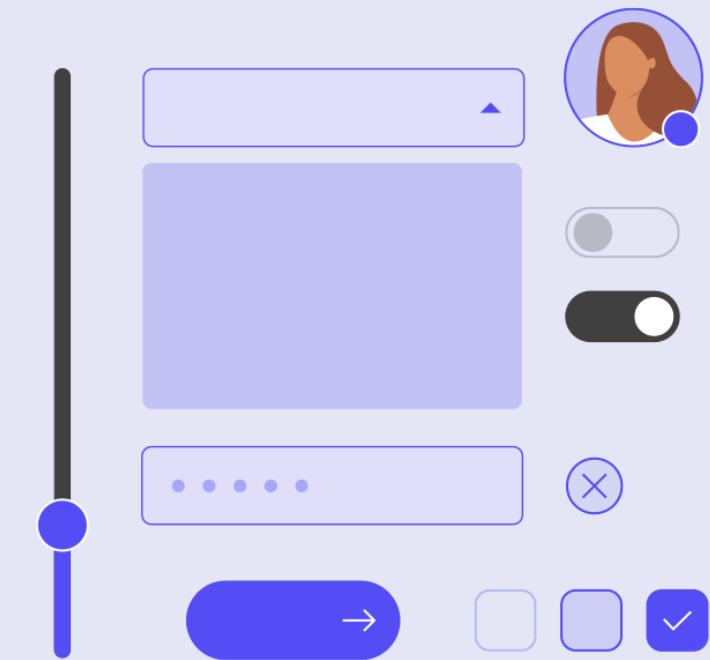
BYOD

Bring Your Own Design



Design System Accelerators

Created by our Partners



Bundled Design Systems

Provided by us

# Business Opportunities

視覚的なインパクトを素早く生み出す  
'Wow effect' in Legacy Modernization scenarios

トータルエクスペリエンスを構築する  
Assessments, Advisory, Implementation

新しいデザインシステムを作成する  
Development Services. Tailored Products

**Future Proof**  
The value of "Knowledge-driven" & "Always up to date"

Thank you!  
どうもありがとうございます!



# GeneXus<sup>TM</sup>

by **Globant**

[genexus.jp](http://genexus.jp)